

1

## Your Presenters



**David Tattam**  
Chief Research & Content Officer



**Adel Fakhreddine**  
Head of Sales –APAC



2

2

## Agenda

- |          |                                    |          |  |
|----------|------------------------------------|----------|--|
| <b>1</b> | Introduction and Housekeeping      | <b>4</b> | Integrating Bow Ties into your ERM Framework |
| <b>2</b> | Risk Bow Tie Concepts              | <b>5</b> | Protecht.ERM Bow Tie Tool Overview           |
| <b>3</b> | Building a Bow Tie in Protecht.ERM | <b>6</b> | Q&A  |

## Housekeeping

1. Questions: Ask questions as we go in the question panel
2. There will be a Q&A session at the end
3. Any questions we don't get to during the webinar we will seek to answer afterwards.
4. Please complete the post webinar feedback questions at the end of the webinar.
5. You will be sent a pdf copy of the slides and a recording of the webinar will be made available to registered participants on our website:

[www.protechtgroup.com](http://www.protechtgroup.com)



## Agenda

- |   |   |
|---|---|
| <b>1</b>   Introduction and Housekeeping      | <b>4</b>   Integrating Bow Ties into your ERM Framework |
| <b>2</b>   Risk Bow Tie Concepts              | <b>5</b>   Protecht.ERM Bow Tie Tool Overview           |
| <b>3</b>   Building a Bow Tie in Protecht.ERM | <b>6</b>   Q&A  |

## Uses of the Bow Tie

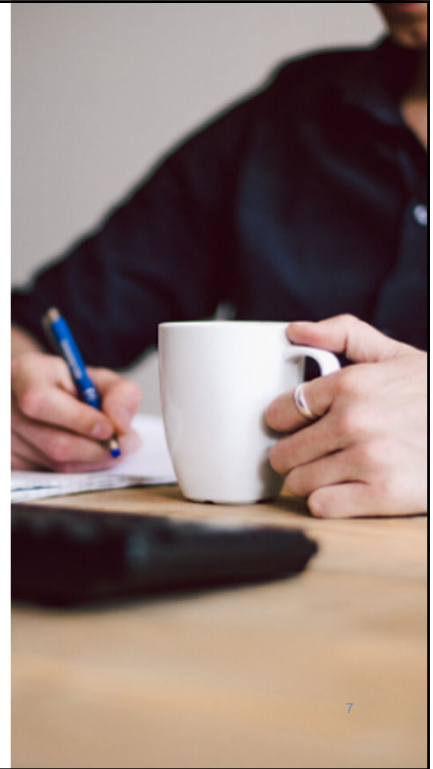
1. Common view of risk
2. Logical risk analysis
3. Root cause analysis
4. Risk Assessment – size of risk
5. Controls Assessment – group of controls
6. Metric identification
7. Storytelling



## Polling Question

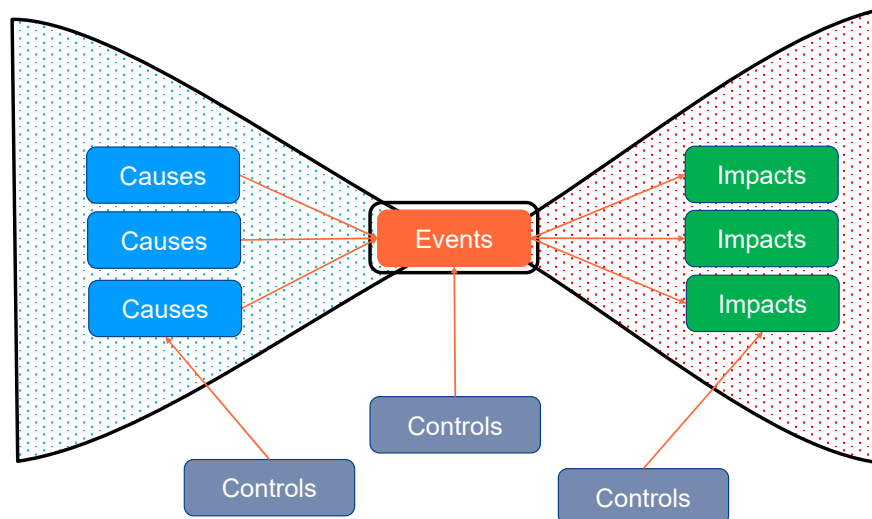
How extensively are you currently using Risk Bow Ties?

1. Not at all
2. Infrequently on an ad hoc basis
3. Regularly for incident management
4. Comprehensively across incidents and risks



7

## The Building Blocks of Bow Ties



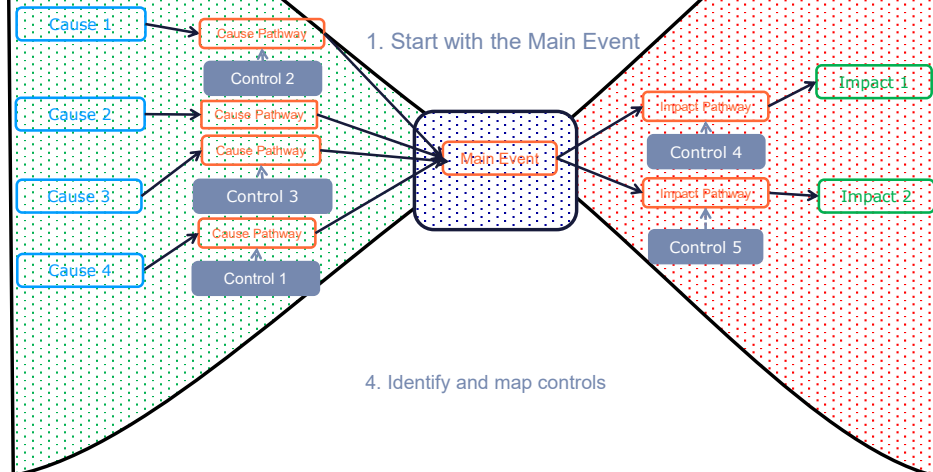
8

8

## Construction of the Bow Tie – Barrier Method

2. Trace back to Causes by asking "But Why?". Stop when answer is "It just is" or "It is outside of your influence"

3. Trace forward to Impacts by asking "What Next?". Stop when answer is an impact on objective(s)



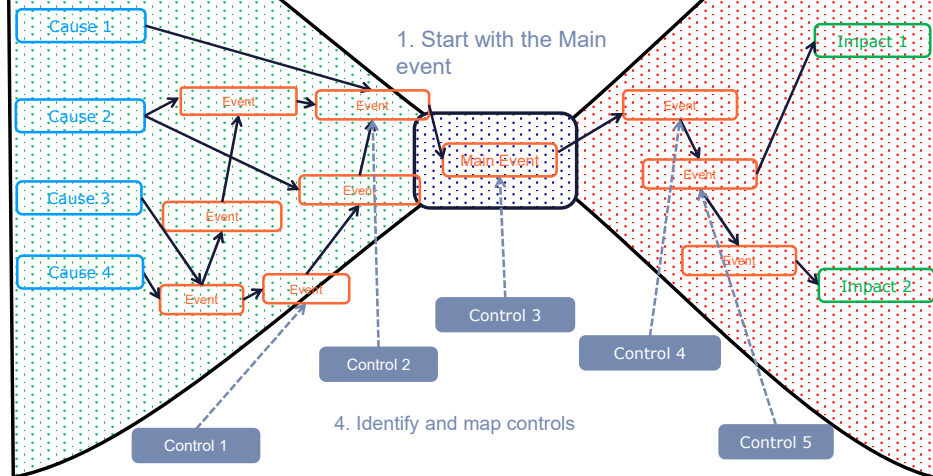
9

9

## Construction of the Bow Tie – Comprehensive Method

2. Trace back to Causes by asking "But Why?". Stop when answer is "It just is" or "It is outside of your influence"

3. Trace forward to Impacts by asking "What Next?". Stop when answer is an impact on objective(s)



10

10

## Agenda

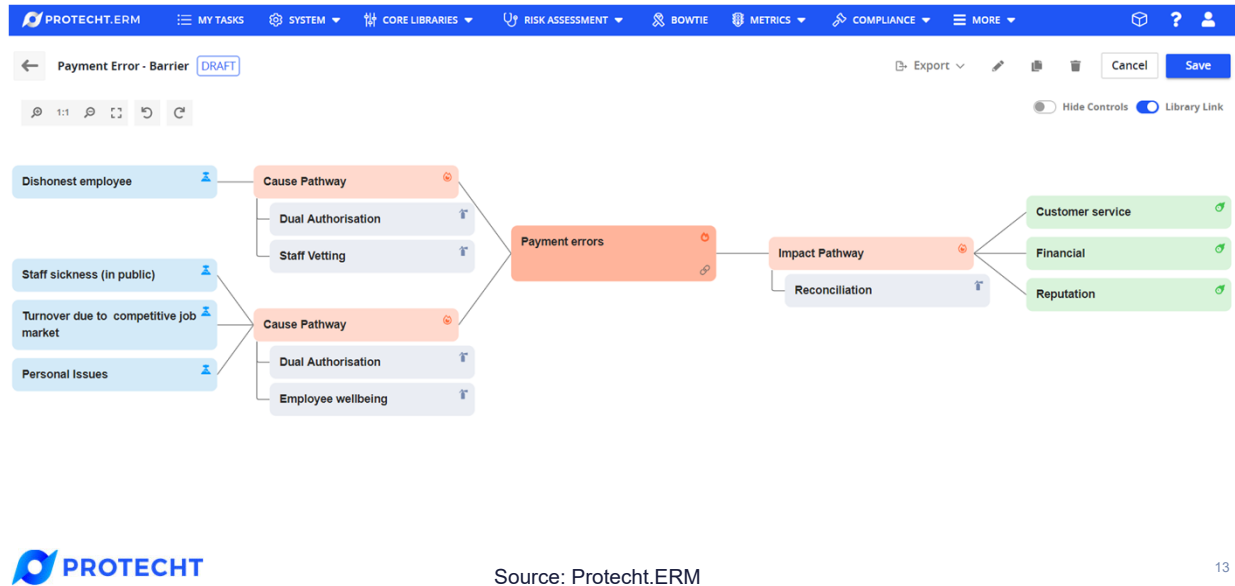
- |   |   |
|---|---|
| <b>1</b>   Introduction and Housekeeping      | <b>4</b>   Integrating Bow Ties into your ERM Framework |
| <b>2</b>   Risk Bow Tie Concepts              | <b>5</b>   Protecht.ERM Bow Tie Tool Overview           |
| <b>3</b>   Building a Bow Tie in Protecht.ERM | <b>6</b>   Q&A  |

## Bow Tie Example

### Payment error

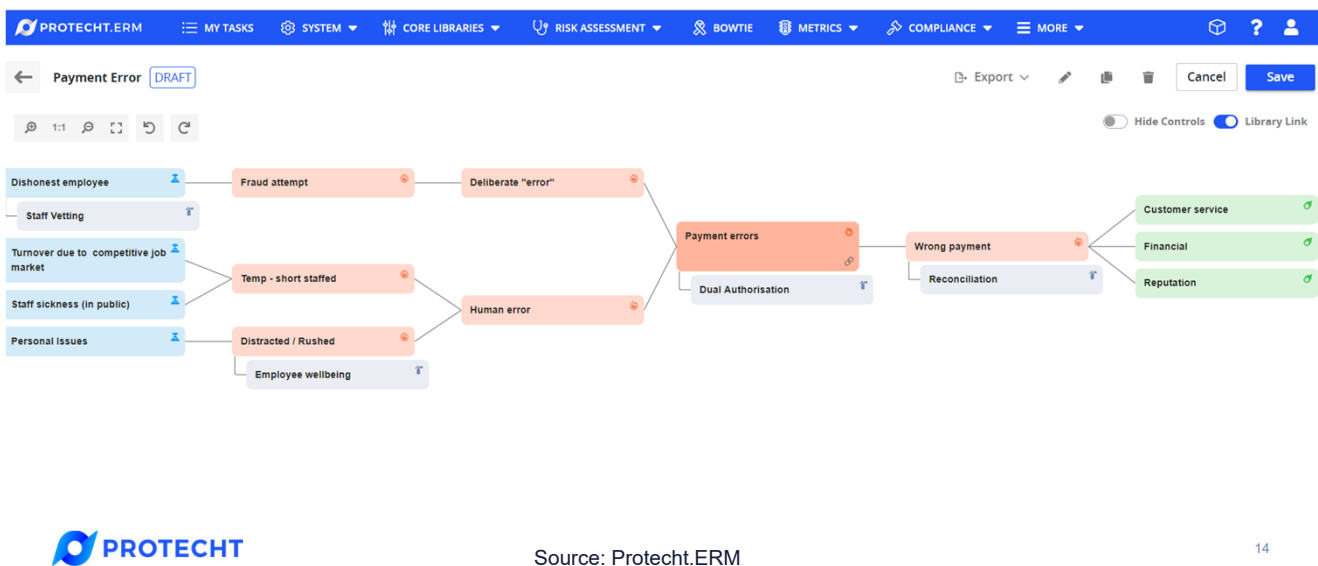
1. Barrier Method
2. Comprehensive Method

## Example Bow Tie – Barrier Method



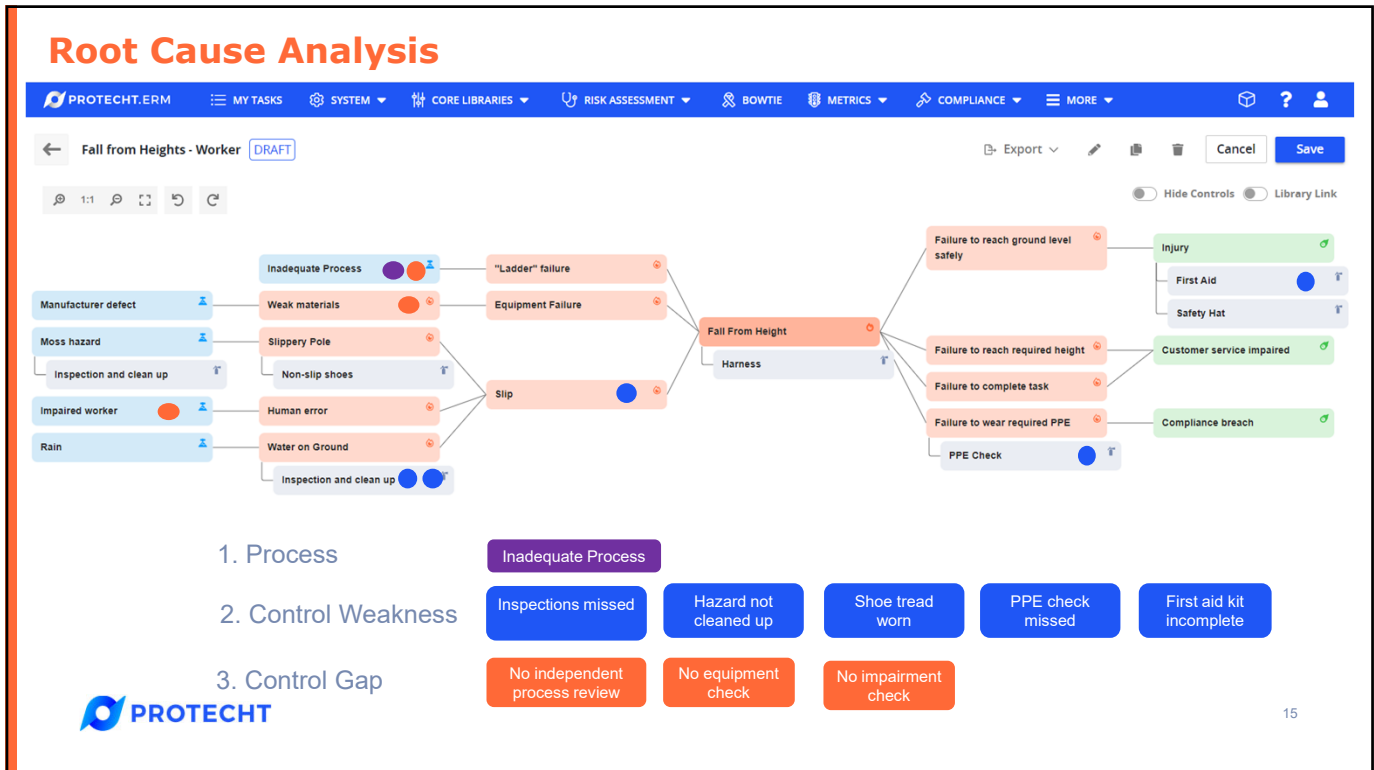
13

## Example Bow Tie – Comprehensive Method



14



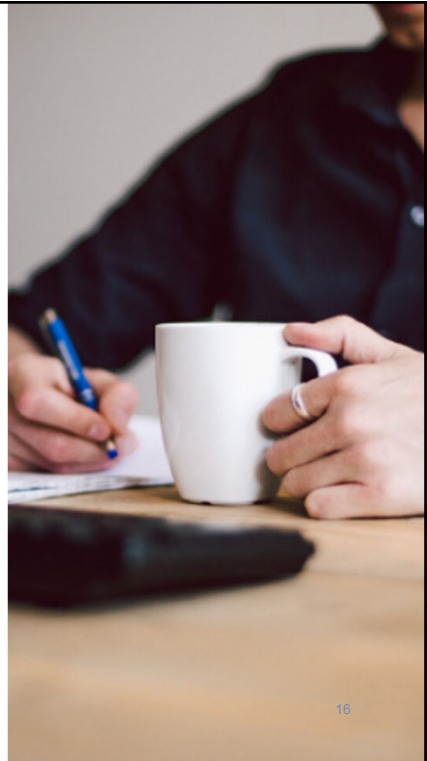


15

## Polling Question

What systems are you currently using for Bow Tie Analysis?  
(multi select)

1. Pen and Paper / Whiteboard and Pen
2. Microsoft tools e.g. Word, PowerPoint, excel ...
3. Process / mind map tools e.g. Visio, Mind Maps
4. Point solution for Bow Tie – e.g. Bow Tie XP
5. Embedded part of your GRC / ERM system



16



## Agenda

- |  |   |
|--|---|
| <p><b>1</b>   Introduction and Housekeeping</p> <p><b>2</b>   Risk Bow Tie Concepts</p> <p><b>3</b>   Building a Bow Tie in Protecht.ERM</p> | <p><b>4</b>   Integrating Bow Ties into your ERM Framework</p> <p><b>5</b>   Protecht.ERM Bow Tie Tool Overview</p> <p><b>6</b>   Q&amp;A</p> |
|--|---|

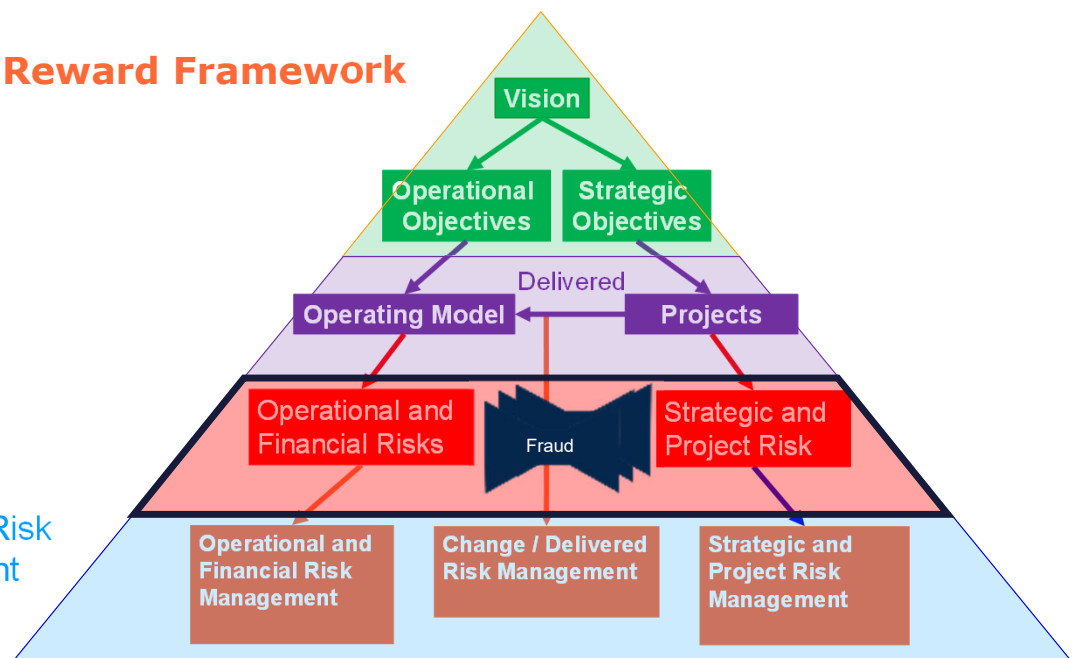
## Risk and Reward Framework

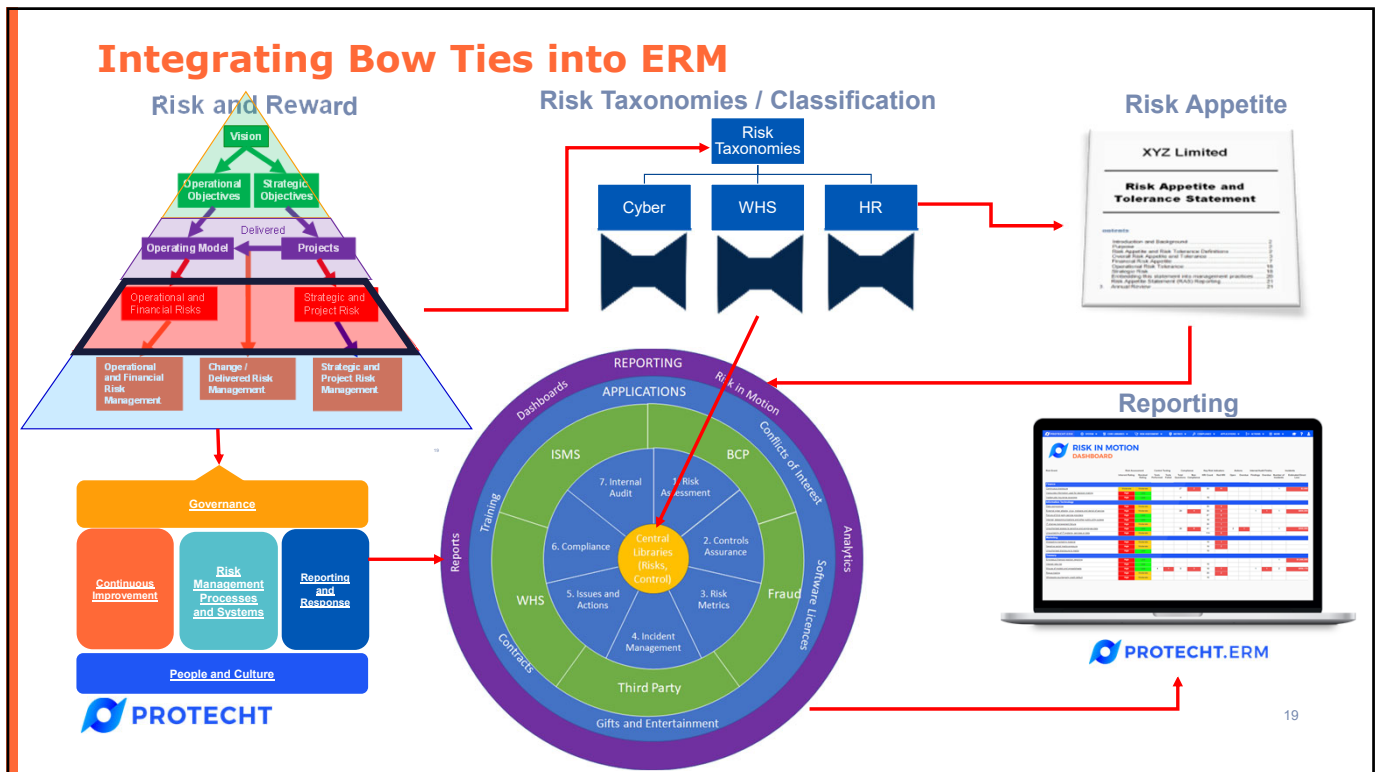
Outcomes

Processes / Projects

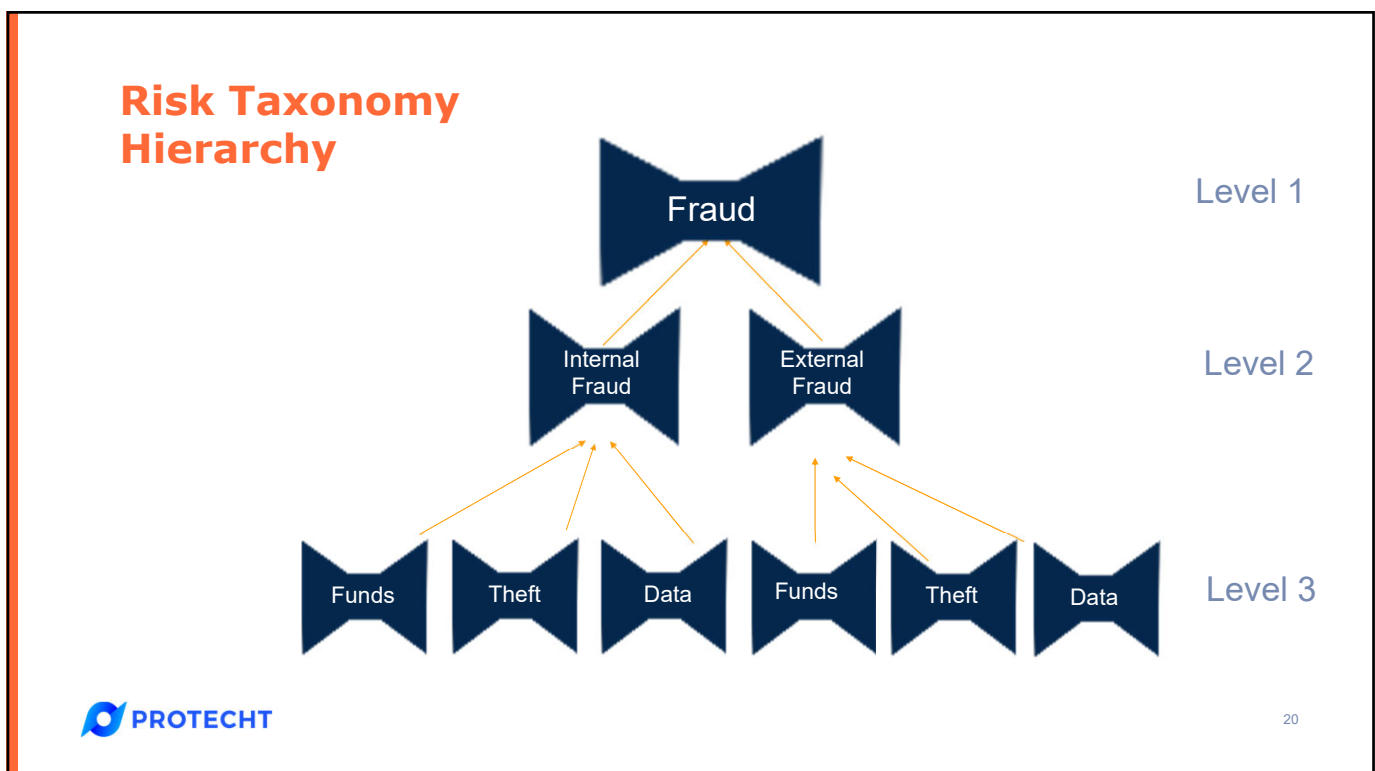
Risks

Enterprise Risk Management



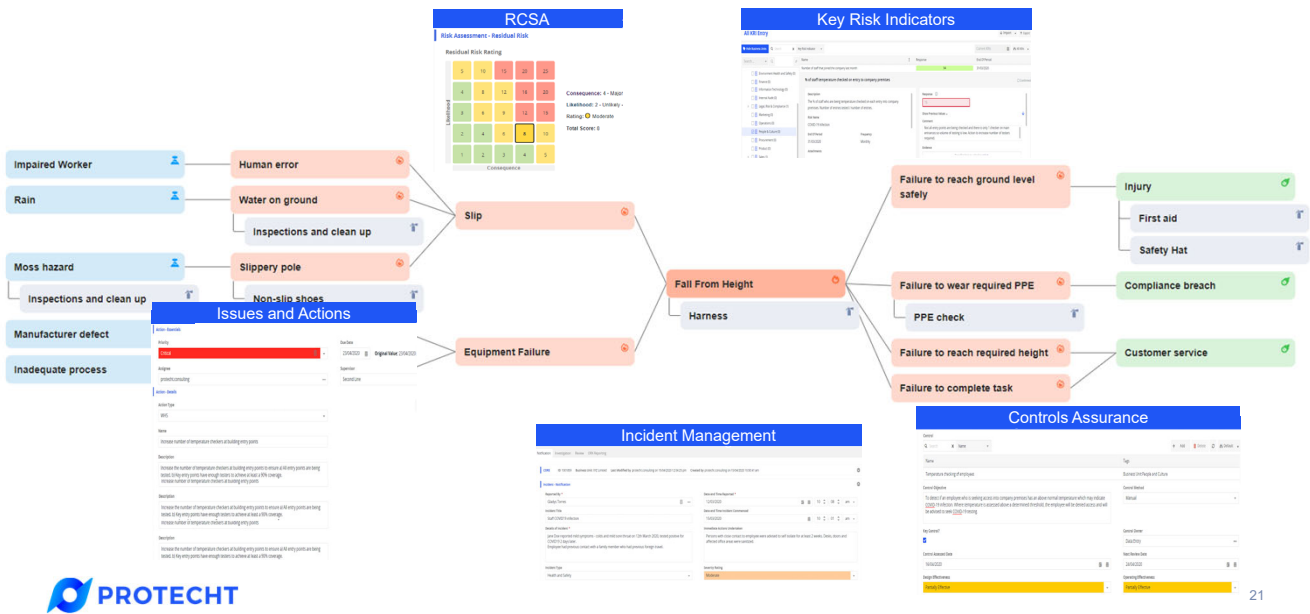


19



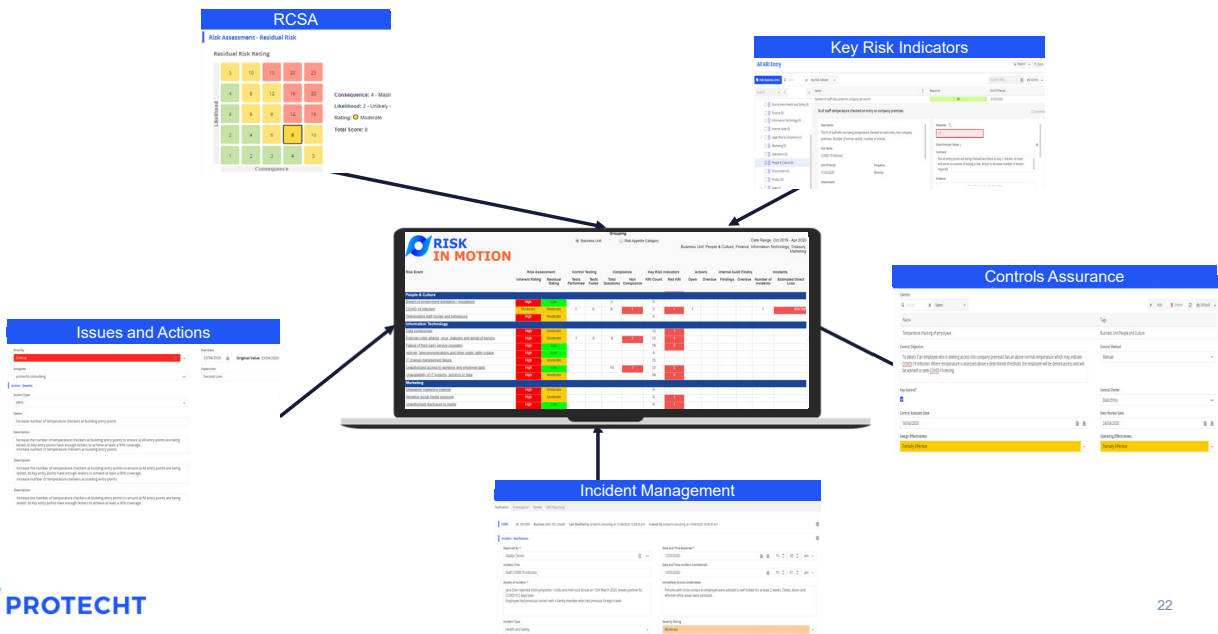
20

## Dynamic Risk Profile



21

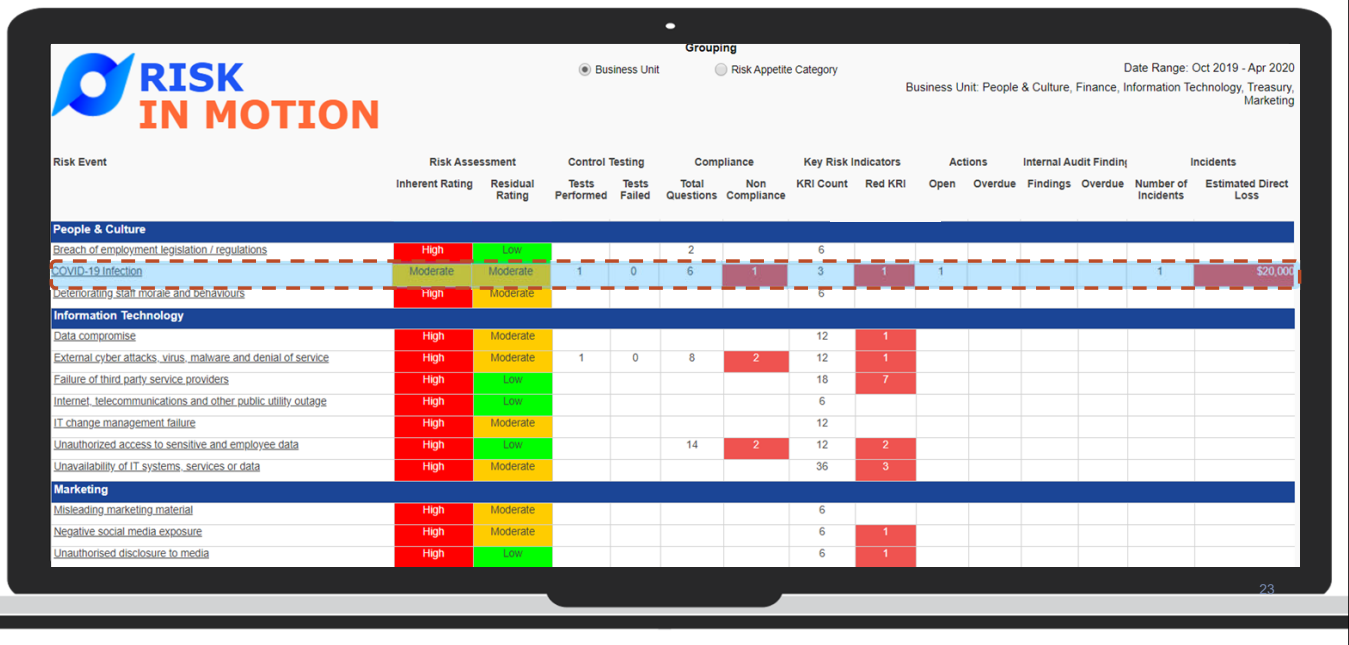
## Reporting and Analytics



22

22

## Dynamic Reporting



**RISK IN MOTION**

Grouping: Business Unit, Risk Appetite Category

Date Range: Oct 2019 - Apr 2020

Business Unit: People & Culture, Finance, Information Technology, Treasury, Marketing

Risk Event	Risk Assessment		Control Testing		Compliance		Key Risk Indicators		Actions		Internal Audit Finding		Incidents	
	Inherent Rating	Residual Rating	Tests Performed	Tests Failed	Total Questions	Non Compliance	KRI Count	Red KRI	Open	Overdue	Findings	Overdue	Number of Incidents	Estimated Direct Loss
<b>People &amp; Culture</b>														
Breach of employment legislation / regulations	High	Low			2		6							
COVID-19 Infection	Moderate	Moderate	1	0	6	1	3	1	1				1	\$20,000
Automating staff intake and continuous	High	Moderate					6							
<b>Information Technology</b>														
Data compromise	High	Moderate					12	1						
External cyber attacks, virus, malware and denial of service	High	Moderate	1	0	8	2	12	1						
Failure of third party service providers	High	Low					18	7						
Internet, telecommunications and other public utility outage	High	Low					6							
IT change management failure	High	Moderate					12							
Unauthorized access to sensitive and employee data	High	Low			14	2	12	2						
Unavailability of IT systems, services or data	High	Moderate					36	3						
<b>Marketing</b>														
Misleading marketing material	High	Moderate					6							
Negative social media exposure	High	Moderate					6	1						
Unauthorised disclosure to media	High	Low					6	1						

23

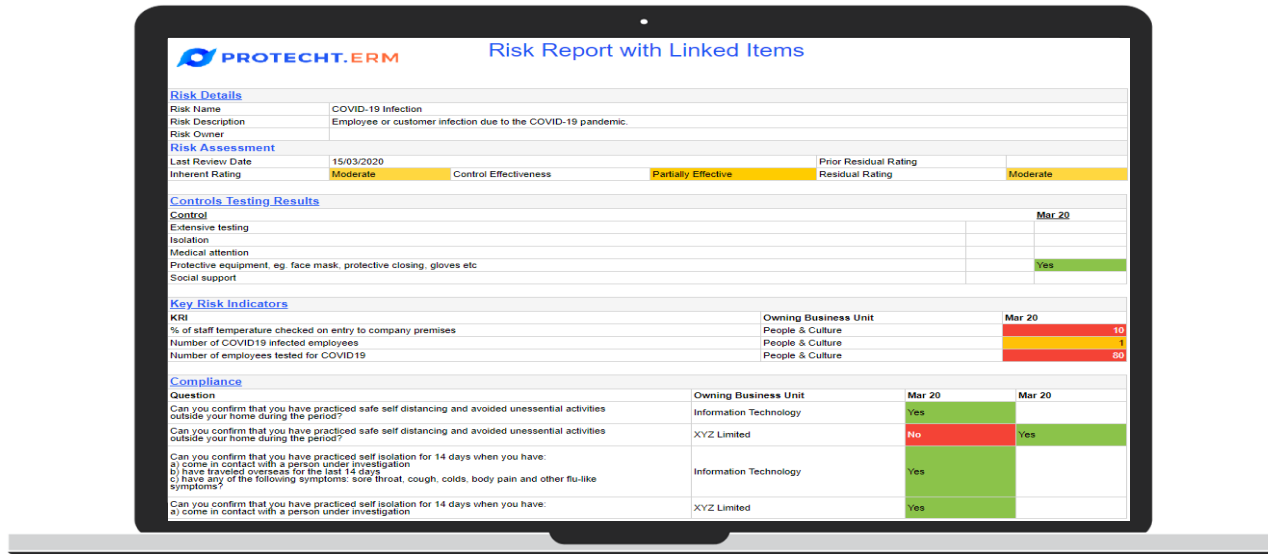
## COVID-19 Infection Bow Tie



24

24

## Drilldown



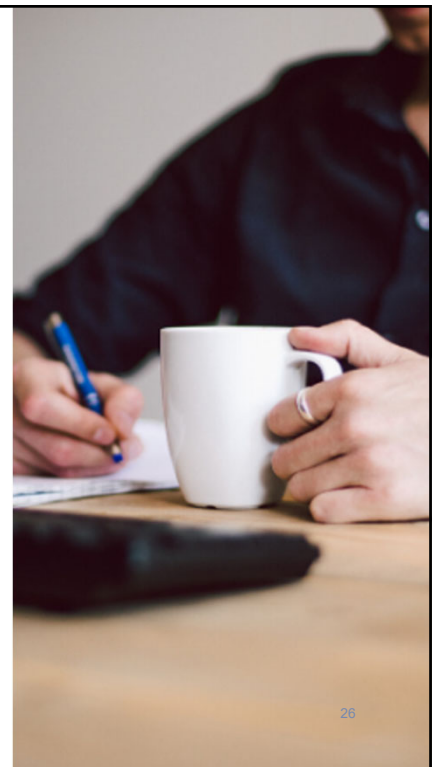
PROTECHT.ERM Risk Report with Linked Items			
<b>Risk Details</b>			
Risk Name	COVID-19 Infection		
Risk Description	Employee or customer infection due to the COVID-19 pandemic.		
Risk Owner			
<b>Risk Assessment</b>			
Last Review Date	15/03/2020	Prior Residual Rating	
Inherent Rating	Moderate	Control Effectiveness	Partially Effective
		Residual Rating	Moderate
<b>Controls Testing Results</b>			
Control			Mar 20
Extensive testing			
Isolation			
Medical attention			
Protective equipment, eg. face mask, protective clothing, gloves etc.			Yes
Social support			
<b>Key Risk Indicators</b>			
KRI	Owning Business Unit		Mar 20
% of staff temperature checked on entry to company premises	People & Culture		10
Number of COVID19 infected employees	People & Culture		1
Number of employees tested for COVID19	People & Culture		50
<b>Compliance</b>			
Question	Owning Business Unit	Mar 20	Mar 20
Can you confirm that you have practiced safe self distancing and avoided unessential activities outside your home during the period?	Information Technology	Yes	
Can you confirm that you have practiced safe self distancing and avoided unessential activities outside your home during the period?	XYZ Limited	No	Yes
Can you confirm that you have practiced self isolation for 14 days when you have: a) come in contact with a person under investigation b) have traveled overseas for the last 14 days c) have any of the following symptoms: sore throat, cough, colds, body pain and other flu-like symptoms?	Information Technology	Yes	
Can you confirm that you have practiced self isolation for 14 days when you have: a) come in contact with a person under investigation	XYZ Limited	Yes	

25

## Polling Question

What is your planned use of Bow Ties going forward?

1. I will use them less
2. I will use them the same as now
3. I will use them more



26

## Agenda

- |   |   |
|---|---|
| <b>1</b>   Introduction and Housekeeping      | <b>4</b>   Integrating Bow Ties into your ERM Framework |
| <b>2</b>   Risk Bow Tie Concepts              | <b>5</b>   <b>Protecht.ERM Bow Tie Tool Overview</b>    |
| <b>3</b>   Building a Bow Tie in Protecht.ERM | <b>6</b>   Q&A  |

## Agenda

- |   |   |
|---|---|
| <b>1</b>   Introduction and Housekeeping      | <b>4</b>   Integrating Bow Ties into your ERM Framework |
| <b>2</b>   Risk Bow Tie Concepts              | <b>5</b>   Protecht.ERM Bow Tie Tool Overview           |
| <b>3</b>   Building a Bow Tie in Protecht.ERM | <b>6</b>   <b>Q&amp;A</b>                               |

## Questions and concluding remarks

Enter your question in the question section on the *GoTo* control panel.

If the question input area is not visible, click on the orange arrow at the top of the panel to expand the viewing area.

Redefining the way the world thinks about risk



29

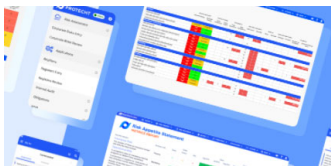
## Upcoming Activities: [protechtgroup.com/knowledge-centre](https://protechtgroup.com/knowledge-centre)



### Operational Resilience

Are you prepared for what's coming?

Two session: October 21st. APAC 12:30 to 1:30 or EMEA 10:00 a.m. to 11:00 a.m.



### Protecht.ERM System 101 Demo

Transforming your risk management from spreadsheets

Tuesday 26th October, 12:30




### eBook:

**A Definitive Guide to Culture Risk, Conduct Risk and Risk Culture**

[protechtgroup.com/ebooks](https://protechtgroup.com/ebooks)

30





**PROTECHT THOUGHT LEADERSHIP WEBINAR**

## Risk Bow Tie Analysis

**On-Demand Webinar**

Risk Bow Tie Analysis, from its humble beginnings in the late 70's, has become the most commonly used tool to analyse (including root cause analysis), document and communicate any type of risk.

During this 60 minute webinar, we will provide an overview of the uses of, and the construction methods of, Risk Bow Ties to assist you in making Risk Bow Tie Analysis an integral, essential and valuable part of your ERM framework.

**In this live webinar we covered:**

- The Uses of Risk Bow Ties
- The Building Blocks of Causes, Events, Impacts and Controls
- Bow Tie construction methodology
- Using Bow Ties for Root Cause Analysis
- Essential skills for good Bow Ties
- Case Study - Building a Bow Tie
- Integrating Bow Ties into your ERM framework
- Questions and Answers

*Just fill out the form to access the recording and slides.*



**WATCH THE WEBINAR NOW**

First Name*	Last Name*
Business Email*	Phone*
Country*	
Company*	Employees*
Job Level*	Job Function*
Questions and/or Message	

☐ Protecht uses the information you provide to contact you about relevant content, products and services. You may unsubscribe from these communications at any time by clicking on the footer of our emails.

☐ Please confirm that you consent to allow Protecht to store and process your personal information to provide you the content requested. For more information about how we handle your data, check out our [Privacy Policy](#).

**Watch now**

31



32